

Genetics and **advice**
you can trust

ABSOLUTE
RESULTS



INDIA

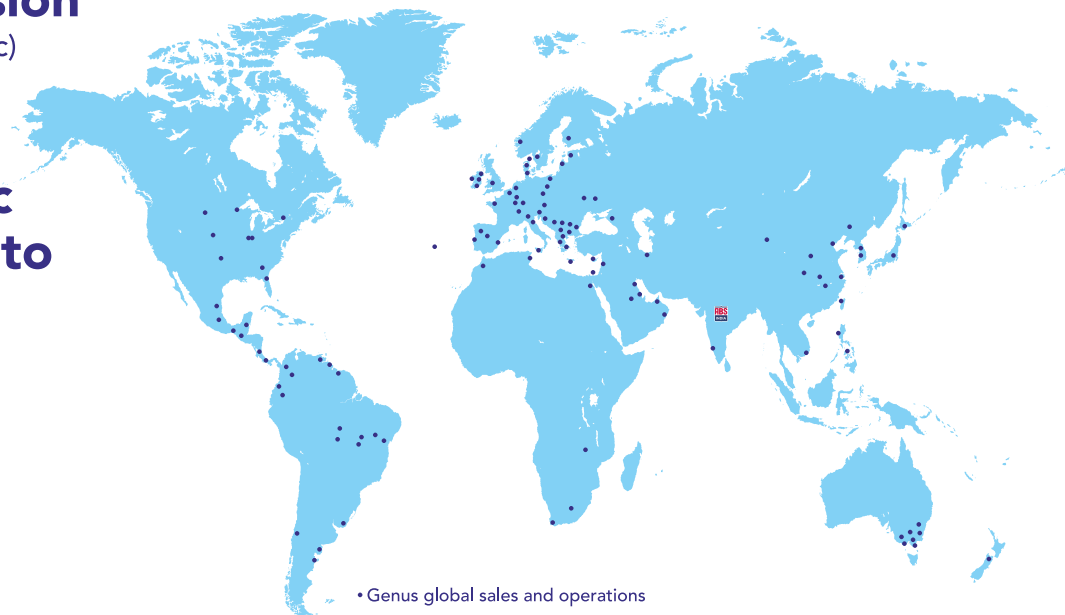
DAIRY

SIRE DIRECTORY

The Genus Vision

(ABS is part of Genus Plc)

Pioneering
animal genetic
improvement to
help nourish
the world.



• Genus global sales and operations

THE WORLD LEADER IN BOVINE GENETICS
LONG LIFE PRODUCTIVE COWS





THE WORLD LEADER IN BOVINE GENETICS

ABS PRIMETIME[®] GENOMIC SIRE S

ABS India has the bull power to provide breeding solutions to producers around the country.

These sires deliver the industry's most sought-after genetics, providing dairy farmers the opportunity to take advantage of elite genetics that deliver profitability through outstanding production, type, udder improvement and superior feet & legs traits. Contact your local ABS representative to add ABS PrimeTime Genomic Sires to your breeding program today!

29HO16883
WISCONSIN
JORDAN X BOLIVER

Daughter's Avg. Milk	FAT
12,100 kg	3.66%

29HO16770
PIONEER
GAILLURON X BOLIVER

Daughter's Avg. Milk	FAT
12,470 kg	3.70%

29HO17679
CHAMPION
PENNYMAKER X 030

Daughter's Avg. Milk	FAT
11,963 kg	3.70%

29HO17680
CHARM
JUNCTION X BOCADO

Daughter's Avg. Milk	FAT
12,264 kg	3.72%

29HO16762
DOLLAR
PENNYMAKER X ALTAKARAT

Daughter's Avg. Milk	FAT
11,601 kg	3.77%

29HO16766
MONEYMAKER
PENNYMAKER X JACOB

Daughter's Avg. Milk	FAT
11,894 kg	3.76%

High Milk | High Fat | Best Udders | Superior Legs & Feet
High Net Merit | High Productive Life | Better Calving Ease





ABS GLOBAL

Headquartered in DeForest, Wisconsin, **ABS Global** is the world-leading provider of bovine genetics, reproduction services, technologies and udder care products. Marketing in more than 70 countries around the globe, **ABS** has been at the forefront of animal genetics and technology since its founding in 1941. **ABS Global** is a division of Genus plc.

Our strength in this ever-changing market comes with over 70 years of service to dairy producers around the world. And while we recognize no single formula can solve the genetic needs of every operation in the world, we are focused on the single goal of helping our customers succeed. As a result, **ABS** offers a varied line of superior genetics-with unique services, technology and products-to meet the demands of the many climates, market variations and preferences of the cultures we serve.

Along with these quality tools, are quality people who understand the value and need of the service they provide. Wherever you find **ABS**, you'll find people committed to the success of the customers we serve-striving to provide protein and energy to more of the world's people.

GLOBAL PRODUCTION FACILITIES

North America	USA, Canada
South America	Brazil
Europe	UK, Italy
Asia	India, China
Australia	Australia

MANY FIRST from ABS GLOBAL

1953	ABS produced first calf using frozen semen in North America - "FROSTY"
1956	ABS developed the first cryogenic insulated vessel with Union Carbide
1960	ABS launched first comprehensive system of genetic linear assessment for Type
1968	ABS launched GMS - First Comprehensive program designed to optimize genetic progress
1988	ABS became the first company to successfully clone bulls out of embryo splitting
1997	ABS produced first cloned calf out of a somatic cell, named "GENE"
2008	Incorporated genomic values in its sire acquisition program
2013	18 of ABS bulls cross One Million Mark...
	...many more to cross this landmark in next few years.



ABS INDIA

Genus Breeding India (**ABS India**) is part of Genus PLC- the world's leading provider of bovine genetics and reproduction services, marketing in more than 70 countries around the globe. Genus Breeding India Pvt. Ltd. is a fully owned subsidiary of Genus PLC (listed on the UK stock exchange) and was established in early 2010. Through Genus' extensive research and development programme, its cutting edge technology is being used to maximise the potential of dairy farms throughout the world.

Genus Breeding India (**ABS India**) is part of ABS Global, a division of Genus plc. Worldwide Genus PLC is the owner of **ABS** and PIC, the two largest companies in bovine and porcine genetics respectively. Genus PLC also owns Promar International, the leading livestock consulting company in the world. **ABS** is the first Bovine Genetics Company of its kind, founded in 1947 and has offices in 30 countries and five continents with its research laboratory in Madison, USA.

Genus Breeding India (**ABS India**) has also entered into a JV with Chitale Dairy situated in Maharashtra for production of semen from the selected elite bulls in India through Chitale Genus ABS (India) Pvt. Ltd. **ABS India** adopts its international standard for selection of bulls for semen production with regards to genetics and health standards. **ABS India** has also started producing and marketing semen produced out of the bulls born through embryos imported from North America and genomically testing them.

ABS India has top HF / Jersey / Murrah / Crossbred Bulls in the country that are the highest in genetic merit.

ABS India also offers world's best dairy genetics through imported Holstien & imported Jersey from **ABS USA** facility and imported GIR from **ABS Brazil**.

INDIA PRODUCTION FACILITY

Maharashtra (Near Pune)

DISTRIBUTION CENTERS

Punjab, Haryana, Uttar Pradesh,
Rajasthan, Bihar, Gujarat, Maharashtra,
Tamil Nadu, Andhra Pradesh, Karnataka

WISCONSIN

29HO16883 ABS WISCONSIN HF 100% Born: 08.03.2013
Sire: Gilette Jordan Dam: Comestar Model Liz Boliver
Bred by: Comestar Holsteins Canada Dam's Sire: Boliver



IB-M/USA 04/13 (*10)	Daughters Genomic Values	Herds Genomic %	Phenotypic Values	Values%
Projected Transmitting Ability (PTA)	+574		12,100 kg	
Milk	+34	0.06%	371 kg	3.07%
Protein	+23	0.01%	443 kg	3.66%
Fat				
Net Merit	\$ 461		INR 28,240	
Cheese Merit	\$ 531		INR 35,529	
Daughter Pregnancy Rate	+4		26.60%	
Service Sire Calving Ease	6.4% Diff.		6.4% Diff.	
Daughter Calving Ease	5.4% Diff.		5.4% Diff.	
Somatic Cell Score	2.83		2.83	
Productive Life	+3.6 Months		108 Days	

HA 04/13	G Dtrs	G Herds	Rel. 75%
		-1 0 +1 +2	
Type	2.18		
Udder Composite	2.00		
Feet & Legs Composite	2.23		
Stature	1.30		
Strength	1.04		
Body Depth	1.06		
Dairy Form	1.06		
Rump Angle	-0.31		
Thurl Width	-0.15		
Rear Legs-Side View	-0.88		
Rear Legs-Rear View	1.98		
Foot Angle	2.60		
Feet & Legs Score	2.36		
Fore Udder Attachment	2.62		
Rear Udder Height	2.83		
Rear Udder Width	2.75		
Udder Cleft	2.31		
Udder Depth	1.25		
Front Teat Placement	1.24		
Rear Teat Placement	1.45		
Teat Length	0.41		



FREEDOM

29HO17544 ABS FREEDOM HF 100%
Sire: Stantons Steady Dam: Dudoc Goldwyn Clavicule - ET
Bred by: Comestar Holsteins Canada Dam's Sire: Goldwyn



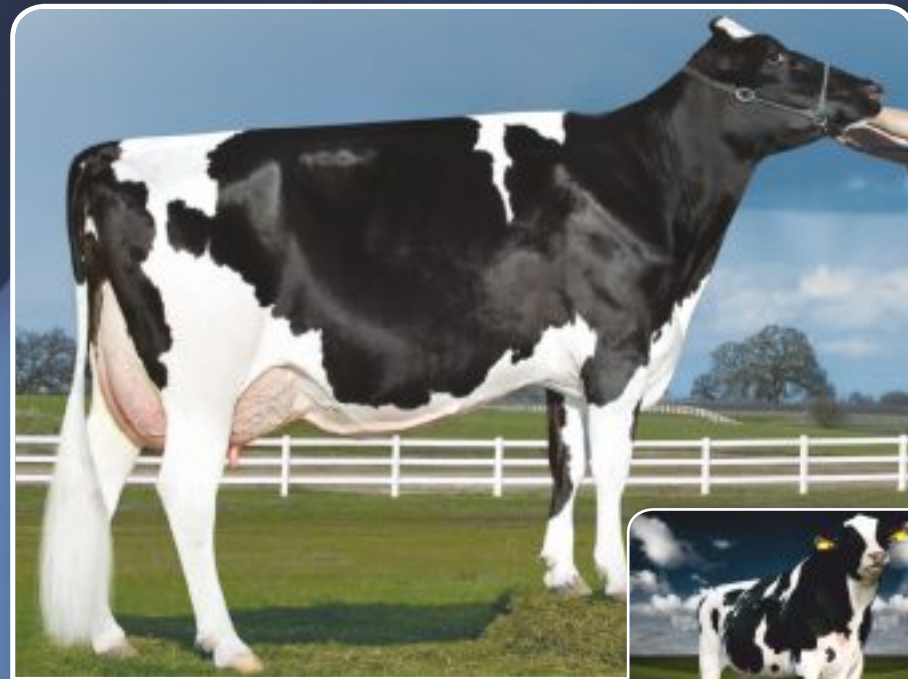
Projected Transmitting Ability (PTA)	Daughters Genomic Values	Herds Genomic %	Values %
Milk	12,100 kg		
Protein	368 kg	0.06%	3.04%
Fat	460 kg	0.01%	3.80%
Net Merit	(INR 20,580)		
Cheese Merit	(INR 22,560)		
Service Sire Calving Ease	6.7% Diff.		
Daughter Calving Ease	4.8% Diff.		
Somatic Cell Score	2.88		
Productive Life	45 Days		

HA 04/13	G Dtrs	G Herds	Rel. 71%
		-1 0 +1 +2	
Type	2.44		
Udder Composite	1.91		
Feet & Legs Composite	1.67		
Stature	2.47		
Strength	0.88		
Body Depth	1.44		
Dairy Form	2.70		
Rump Angle	2.43		
Thurl Width	0.54		
Rear Legs-Side View	1.37		
Rear Legs-Rear View	1.58		
Foot Angle	1.31		
Feet & Legs Score	2.35		
Fore Udder Attachment	1.85		
Rear Udder Height	2.61		
Rear Udder Width	2.55		
Udder Cleft	2.14		
Udder Depth	1.60		
Front Teat Placement	1.32		
Rear Teat Placement	1.19		
Teat Length	0.50		



PIONEER

29HO16770 ABS PIONEER HF 100% Born: 18.08.2012
Sire: Favreautiere Galluron Dam: Comestar Model Liz Boliver
Bred by: Comestar Holsteins Canada Dam's Sire: Boliver



IB-M/USA 04/13 (*10)	Daughters Genomic Values	Herds Genomic %
Projected Transmitting Ability (PTA)	12,470 kg	
Milk	380 kg	3.05%
Protein	459 kg	3.70%
Fat		
Net Merit	\$ 426 (INR 29,800)	
Cheese Merit	\$ 468	
Daughter Pregnancy Rate	21.3%	
Service Sire Calving Ease	6% Diff.	
Daughter Calving Ease	9% Diff.	
Somatic Cell Score	2.94	
Productive Life	2.1 Months	
Reliability	77%	

HA 04/13	G Dtrs	G Herds	Rel. 75%
		-1 0 +1 +2	
Type	1.50		
Udder Composite	0.59		
Feet & Legs Composite	0.74		
Stature	0.65		
Strength	1.32		
Body Depth	1.76		
Dairy Form	1.88		
Rump Angle	0.54		
Thurl Width	0.68		
Rear Legs-Side View	0.61		
Rear Legs-Rear View	1.01		
Foot Angle	0.50		
Feet & Legs Score	0.98		
Fore Udder Attachment	1.10		
Rear Udder Height	1.17		
Rear Udder Width	1.22		
Udder Cleft	1.39		
Udder Depth	-0.48		
Front Teat Placement	1.29		
Rear Teat Placement	1.06		
Teat Length	1.19		

SYMBOL LEGEND

ABS Pregnancy Kings Conception (PKC)

7% or Less Calving Ease (>100 Observations)

INDEPENDENCE

29HO17543 ABS INDEPENDENCE HF 100%
Sire: Stantons Steady Dam: Dudoc Goldwyn Clavicule-ET
Bred by: Comestar Holsteins Canada Dam's Sire: Goldwyn



Projected Transmitting Ability (PTA)	Daughters Genomic Values	Herds Genomic %	Values %
Milk	11,839 kg		
Protein	365 kg	0.06%	3.08%
Fat	464 kg	0.01%	3.92%
Net Merit	(INR 18,360)		
Cheese Merit	(INR 22,560)		
Service Sire Calving Ease	7% Diff.		
Daughter Calving Ease	5.9% Diff.		
Somatic Cell Score	3.02		
Productive Life	42 Days		

HA 08/14	G Dtrs	G Herds	Rel. 78%
		-1 0 +1 +2	
Type	2.07		
Udder Composite	2.00		
Feet & Legs Composite	1.84		
Stature	0.70		
Strength	0.45		
Body Depth	0.57		
Dairy Form	0.72		
Rump Angle	-0.09		
Thurl Width	0.53		
Rear Legs-Side View	-0.11		
Rear Legs-Rear View	0.70		
Foot Angle	0.65		
Feet & Legs Score	0.73		
Fore Udder Attachment	0.88		
Rear Udder Height	1.10		
Rear Udder Width	1.16		
Udder Cleft	0.70		
Udder Depth	0.57		
Front Teat Placement	0.64		
Rear Teat Placement	0.59		
Teat Length	-0.02		



DOLLAR

29HO16762 ABS DOLLAR HF 100% Born: 14.12.2011
Sire: Pennymaker M G Sire: Alta Karat



IB-M/USA 04/13 (*10) Projected Transmitting Ability (PTA)	Daughters Genomic Values	Herds Genomic %
Milk	11,601 kg	
Protein	359 kg	3.04%
Fat	444 kg	3.77%
Net Merit	\$ 254 (NR 17,780)	
Cheese Merit	\$ 293	
Daughter Pregnancy Rate	23.1%	
Service Sire Calving Ease	8.4% Diff.	
Daughter Calving Ease	6% Diff.	
Somatic Cell Score	2.85	
Productive Life	1.4 Months	
Reliability	72%	

HA 04/13	G Dtrs	G Herds	Rel. 75%
	-1	0	+1 +2
Type	1.63		
Udder Composite	1.76		
Feet & Legs Composite	1.32		
Stature	0.70		
Strength	0.16		
Body Depth	0.31		
Dairy Form	0.42		
Rump Angle	0.11		
Thurl Width	1.01		
Rear Legs-Side View	-0.49		
Rear Legs-Rear View	1.04		
Foot Angle	1.84		
Feet & Legs Score	1.32		
Fore Udder Attachment	1.86		
Rear Udder Height	2.76		
Rear Udder Width	2.69		
Udder Cleft	1.45		
Udder Depth	1.34		
Front Teat Placement	0.90		
Rear Teat Placement	1.33		
Teat Length	0.62		

INNOVATION

29HO17646 ABS INNOVATION HF 100% Born: 17.09.2013
Sire: Stantons Steady Dam's Sire: Goldwyn
Bred by: Comestar Holsteins Canada



Projected Transmitting Ability (PTA)	Daughters Genomic Values	Herds Genomic %
Milk	11,972 kg	
Protein	365 kg	0.04
Fat	462 kg	0.21
Net Merit	(NR 24,900)	
Cheese Merit	(NR 27,420)	
Service Sire Calving Ease	6.5% Diff.	
Daughter Calving Ease	5.4% Diff.	
Somatic Cell Score	3	
Productive Life	75 Days	

HA 04/13	G Dtrs	G Herds	Rel. 75%
	-1	0	+1 +2
Type	2.24		
Udder Composite	1.73		
Feet & Legs Composite	0.81		
Stature	1.25		
Strength	0.98		
Body Depth	1.50		
Dairy Form	2.38		
Rump Angle	1.93		
Thurl Width	0.51		
Rear Legs-Side View	1.45		
Rear Legs-Rear View	0.85		
Foot Angle	0.27		
Feet & Legs Score	1.41		
Fore Udder Attachment	2.08		
Rear Udder Height	2.54		
Rear Udder Width	2.48		
Udder Cleft	1.60		
Udder Depth	1.19		
Front Teat Placement	1.72		
Rear Teat Placement	0.73		
Teat Length	0.68		

MAXIMUM

29HO16767 ABS WISCONSIN HF 100% Born: 07.12.2011
Sire: GABE M G Sire: Alta Karat



IB-M/USA 04/13 (*10) Projected Transmitting Ability (PTA)	Daughters Genomic Values	Herds Genomic %
Milk	11,899 kg	
Protein	363 kg	3.01%
Fat	427 kg	3.65%
Net Merit	\$ 58 (NR 4,060)	
Cheese Merit	\$ 63	
Daughter Pregnancy Rate	22.8%	
Service Sire Calving Ease	7.4% Diff.	
Daughter Calving Ease	7% Diff.	
Somatic Cell Score	2.81	
Productive Life	0	
Reliability	75%	

HA 04/13	G Dtrs	G Herds	Rel. 75%
	-1	0	+1 +2
Type	1.00		
Udder Composite	1.14		
Feet & Legs Composite	0.65		
Stature	1.11		
Strength	1.23		
Body Depth	0.73		
Dairy Form	0.17		
Rump Angle	0.51		
Thurl Width	1.47		
Rear Legs-Side View	0.71		
Rear Legs-Rear View	0.59		
Foot Angle	0.80		
Feet & Legs Score	0.61		
Fore Udder Attachment	1.26		
Rear Udder Height	2.04		
Rear Udder Width	2.02		
Udder Cleft	1.31		
Udder Depth	0.31		
Front Teat Placement	1.75		
Rear Teat Placement	2.05		
Teat Length	0.57		

CHAMPION

29HO17679 ABS CHAMPION HF 100% Born: 04.09.2013
Sire: Pennymaker



Projected Transmitting Ability (PTA)	Daughters Genomic Values	Herds Genomic %
Milk	11,963 kg	
Protein	367 kg	0.06
Fat	445 kg	0.07
Net Merit	(NR 38,920)	
Cheese Merit	(NR 38,160)	
Service Sire Calving Ease	7.6% Diff.	
Daughter Calving Ease	6.6% Diff.	
Somatic Cell Score	2.68	
Productive Life	161 Days	

👑 ABS Champion is the son of 3 times grand champion of PDFA dairy show.
👑 Grand Champion 2012
👑 Grand Champion 2013
👑 Grand Champion 2014

HA 04/13	G Dtrs	G Herds	Rel. 71%
	-1	0	+1 +2
Type	1.13		
Udder Composite	1.77		
Feet & Legs Composite	0.40		
Stature	-0.40		
Strength	-0.10		
Body Depth	0.03		
Dairy Form	0.68		
Rump Angle	0.15		
Thurl Width	0.51		
Rear Legs-Side View	-0.74		
Rear Legs-Rear View	-0.10		
Foot Angle	0.76		
Feet & Legs Score	0.38		
Fore Udder Attachment	1.94		
Rear Udder Height	2.81		
Rear Udder Width	2.73		
Udder Cleft	1.90		
Udder Depth	0.98		
Front Teat Placement	1.86		
Rear Teat Placement	1.86		
Teat Length	0.20		

MONEYMAKER

29HO16766 ABS MONEYMAKER HF 100% Born: 04.03.2012
Sire: Pennymaker M G Sire: Eastview Jacob



IB-M/USA 04/13 (*10) Projected Transmitting Ability (PTA)	Daughters Genomic Values	Herds Genomic %
Milk	11,894 kg	
Protein	367 kg	3.03%
Fat	456 kg	3.76%
Net Merit	\$ 380 (NR 26,600)	
Cheese Merit	\$ 415	
Daughter Pregnancy Rate	22.7%	
Service Sire Calving Ease	8.4% Diff.	
Daughter Calving Ease	6% Diff.	
Somatic Cell Score	2.87	
Productive Life	1.8 Months	
Reliability	72%	

HA 04/13	G Dtrs	G Herds	Rel. 71%
	-1	0	+1 +2
Type	0.39		
Udder Composite	0.18		
Feet & Legs Composite	2.87		
Stature	-1.06		
Strength	-0.48		
Body Depth	-0.63		
Dairy Form	-0.05		
Rump Angle	0.07		
Thurl Width	-0.61		
Rear Legs-Side View	-1.11		
Rear Legs-Rear View	0.76		
Foot Angle	1.63		
Feet & Legs Score	0.81		
Fore Udder Attachment	-0.04		
Rear Udder Height	0.01		
Rear Udder Width	0.16		
Udder Cleft	1.48		
Udder Depth	-0.33		
Front Teat Placement	2.30		
Rear Teat Placement	2.54		
Teat Length	1.00		

CHARM

29HO17680 ABS CHARM HF 100% Born: 17.09.2013
Sire: Junction Dam's Sire: Bocado



Projected Transmitting Ability (PTA)	Daughters Genomic Values	Herds Genomic %
Milk	12,264 kg	
Protein	374 kg	0.04
Fat	456 kg	0.07
Net Merit	(NR 29,470)	
Cheese Merit	(NR 27,600)	
Service Sire Calving Ease	7.5% Diff.	
Daughter Calving Ease	5.7% Diff.	
Somatic Cell Score	3	
Productive Life	48 Days	

HA 04/13	G Dtrs	G Herds	Rel. 75%
	-1	0	+1 +2
Type	1.30		
Udder Composite	0.52		
Feet & Legs Composite	1.51		
Stature	0.37		
Strength	0.07		
Body Depth	-0.30		
Dairy Form	0.23		
Rump Angle	-0.03		
Thurl Width	0.41		
Rear Legs-Side View	-0.55		
Rear Legs-Rear View	2.05		
Foot Angle	1.03		
Feet & Legs Score	1.71		
Fore Udder Attachment	0.40		
Rear Udder Height	1.15		
Rear Udder Width	1.21		
Udder Cleft	0.20		
Udder Depth	0.14		
Front Teat Placement	0.47		
Rear Teat Placement	0.70		
Teat Length	0.03		



HOLSTEIN SIRES

HOLSTEIN	DAMS YIELD (kg)	SIRE DAM'S YIELD (kg)	FAT %	FAT (kg)	PROTEIN %	AVERAGE OF HALF SIBS / DAUGHTERS MILKING IN US (kg)	PARENTS AVERAGE YIELD (kg)	SIRE	CATEGORY
MACHO	10,160	18,360	3.7	376	4	11,785	14,260	CARL	ELITE
CARLSON	9,350	18,360	3.6	337	3.6	11,785	13,855	CARL	ELITE
TERMINATOR	8,550	16,823	3.8	325	NA	11,810	12,687	LARS-ACRS TERMINATOR	ELITE
ROCKY	9,150	10,000	3.8	347	NA	NA	9,575	HEK	ELITE
MAXIMUM 🏆	10,500	18,949	3.65	427	3.01	11,899	14,725	GABE	PKC
DALER 🏆	6,250	15,595	3.92	245	4.16	NA	10,923	AHF-10	PKC
DISCOVERY	8,998	16,233	4	NA	NA	12,134	12,616	DISCOVER	PLATINUM
STRATEGY	9,414	16,412	4.0	376	3.3	12,436	12,913	STRATEGIST	PLATINUM
KEVIN	7,335	16,621	4	300	3.8	12,433	11,978	AVALANCHE	PLATINUM
TIGER	7,789	19,854	3.4	263	NA	11,919	13,822	CO-OP MNFRD TIGER	PLATINUM
STEYN	7,015	16,621	4.2	294	3.8	12,433	11,818	AVALANCE	GOLD
PRANAV	6,125	19,865	3.81	233	4.15	11,503	12,995	DESLACS MILKSTAR	GOLD
JAMES	6,125	19,865	3.8	233	4.15	11,503	12,995	DESLACS MILKSTAR	GOLD
ALEX	6,995	16,182	4.1	286	4	11,460	11,589	LA-PRESENTATION VIGNOBLE	GOLD



PKC-HIGH FERTILITY BULLS
Answer to Infertility

ABS Conception

Pregnancy King Conception

MAXIMUM | **DALER**

Increased Conception Rates
More Profitability!

THE WORLD LEADER IN BOVINE GENETICS
LONG LIFE PRODUCTIVE COWS



TOP BULLS



ABS PIONEER
1 Holstein Bull in India



ABS LASER
1 Jersey Bull in India



ABS REDHU
1 Murrah Bull in India



INDIA

JERSEY

SIRE DIRECTORY

THE **WORLD LEADER** IN BOVINE GENETICS
LONG LIFE PRODUCTIVE COWS



LASER



PRODUCTION TRAITS

Dam's Yield	7,001 kg
Sire Dams Yield	5,322 kg
Fat	5.9 %
Protein	3.6 %
Average of half sibs / Daughters miling in the U.S.	7,287 kg
Parent Average Yields	6,162 kg

ARNOLD



PRODUCTION TRAITS

Dam's Yield	6,550 kg
Sire Dams Yield	7,497 kg
Fat	6.4 %
Fat	419 kg
Protein	3.96 %
Average of half sibs / Daughters miling in the U.S.	NA
Parent Average Yields	NA

WILLOW



PRODUCTION TRAITS

Dam's Yield	6,369 kg
Sire Dams Yield	5,322 kg
Fat	6.3 %
Fat	NA
Protein	3.8 %
Average of half sibs / Daughters miling in the U.S.	7,287 kg
Parent Average Yields	5,846 kg

VICTOR



PRODUCTION TRAITS

Dam's Yield	4,271 kg
Sire Dams Yield	6,845 kg
Fat	6.4 %
Fat	273 kg
Protein	3.3 %
Average of half sibs / Daughters miling in the U.S.	NA
Parent Average Yields	5,558 kg

MARTIN



PRODUCTION TRAITS	
Dam's Yield	5,800 kg
Sire Dams Yield	8,101 kg
Fat	5.8 %
Fat	336 kg
Protein	3.6 %
Average of half sibs / Daughters miling in the U.S.	NA
Parent Average Yields	6951 kg

MAXWELL



PRODUCTION TRAITS	
Dam's Yield	5,308 kg
Sire Dams Yield	6,845 kg
Fat	5.7 %
Fat	303 kg
Protein	3.5 %
Average of half sibs / Daughters miling in the U.S.	NA
Parent Average Yields	6,071 kg

MIKE



PRODUCTION TRAITS	
Dam's Yield	6,410 kg
Sire Dams Yield	6,845 kg
Fat	5.9 %
Fat	378 kg
Protein	4 %

NEYMAR



PRODUCTION TRAITS	
Dam's Yield	5,033 kg
Sire Dams Yield	6,845 kg
Fat	5.8 %
Fat	292 kg
Protein	3.6 %
Average of half sibs / Daughters miling in the U.S.	NA
Parent Average Yields	5,939 kg

ADAM



PRODUCTION TRAITS	
Dam's Yield	5,800 kg
Sire Dams Yield	6,845 kg
Fat	6 %
Protein	3.9 %

DAVID



PRODUCTION TRAITS	
Dam's Yield	6,200 kg
Sire Dams Yield	5,322 kg
Fat	5.8 %
Fat	359 kg
Protein	4 %
Average of half sibs / Daughters miling in the U.S.	7,287 kg
Parent Average Yields	5,761 kg

FRANCO



PRODUCTION TRAITS	
Dam's Yield	6,215 kg
Sire Dams Yield	7,497 kg
Fat	5.9 %
Fat	367 kg
Protein	3.4 %
Average of half sibs / Daughters miling in the U.S.	NA
Parent Average Yields	6,856 kg



JERSEY SIRES

Genetic performance is important to the overall profitability of a dairy regardless of size, management or environment. By using a selection of the bulls in the ABS Jersey sire lineup, dairy producers can add profitability through consistent daughters, expected performance and a sound genetic investment.

No matter what size of dairy, the ABS Jersey lineup has what a producer needs to meet their reproductive and genetic herd goals.

SPARTAN HF X SAHIWAL



PRODUCTION TRAITS	
Dam's Yield	5,990 kg
Sire Dams Yield	16,182 kg
Fat	4.8 %
Protein	2.9 %
Average of half sibs / Daughters miling in the U.S.	11,086 kg
Parent Average Yields	11,452 kg

CROSSBREEDS

ABSOLUTE RESULTS

- Reliable Gains for Increased Profit
- Maximum Fertility for Increased Profit
- Low Calving Ease for Safe Use on Heifers

RAMBO



PRODUCTION TRAITS	
Dam's Yield	3,044 kg
Sire Dams Yield	2,836 kg
Fat	4.9 %
Fat	149 kg
Protein	NA
Average of half sibs / Daughters miling in the U.S.	NA
Parent Average Yields	2,940 kg

RED SINDHI



ABS India values your opinion!

Please take our survey which should take less than one minute to complete. This will help us improve our service to you!

Thank you for your participation.



Visit us
www.genusabsindia.com

AUSTIN HF X SAHIWAL



PRODUCTION TRAITS	
Dam's Yield	2,948 kg
Sire Dams Yield	16,620 kg
Fat	6%
Protein	3%
Average of half sibs / Daughters miling in the U.S.	NA
Parent Average Yields	9,784 kg

TROY HF X GIR



PRODUCTION TRAITS	
Dam's Yield	5,800 kg
Sire Dams Yield	18,850 kg
Fat	6.2 %
Protein	3.07 %
Average of half sibs / Daughters miling in the U.S.	12,325 kg
Parent Average Yields	12,350 kg

STOUT



PRODUCTION TRAITS	
Dam's Yield	4,028 kg
Sire Dams Yield	2,836 kg
Fat	4.9 %
Fat	197 kg
Protein	NA
Average of half sibs / Daughters miling in the U.S.	NA
Parent Average Yields	3,432 kg

AJEET



PRODUCTION TRAITS	
Dam's Yield	4,028 kg
Sire Dams Yield	2,836 kg
Fat	4.9 %
Fat	197 kg
Protein	NA
Average of half sibs / Daughters miling in the U.S.	NA
Parent Average Yields	3,432 kg



INDIA

REDHU

World's No.1 Murrah Buffalo Bull

MILK
5,414 kg

FAT
7.9%

THE WORLD LEADER IN BOVINE GENETICS
LONG LIFE PRODUCTIVE COWS



REDHU

PRODUCTION TRAITS	
Dam's Yield	5,414 kg
Sire Dams Yield	4,237 kg
Fat	7.9%
Fat	428 kg
Protein	NA
Parent Average Yields	4,826 kg

JOHNSON

PRODUCTION TRAITS	
Dam's Yield	4,973 kg
Sire Dams Yield	4,750 kg
Fat	7.5%
Fat	373 kg
Protein	NA
Parent Average Yields	4,862 kg

DARA

PRODUCTION TRAITS	
Dam's Yield	4,686 kg
Sire Dams Yield	NA
Fat	7.5%
Fat	351 kg
Protein	NA
Parent Average Yields	NA

MAHABALI

PRODUCTION TRAITS	
Dam's Yield	4,332 kg
Sire Dams Yield	4,093 kg
Fat	7.7%
Fat	333 kg
Protein	NA
Parent Average Yields	NA

SHANKAR

PRODUCTION TRAITS	
Dam's Yield	4,313 kg
Sire Dams Yield	4,398 kg
Fat	7.8%
Fat	336 kg
Protein	NA
Parent Average Yields	4,356 kg

VIJAY

PRODUCTION TRAITS	
Dam's Yield	4081 kg
Sire Dams Yield	3404 kg
Fat	8.2%
Fat	335 kg
Protein	4.87%
Parent Average Yields	3,743 kg

VENKAT

PRODUCTION TRAITS	
Dam's Yield	4,344 kg
Sire Dams Yield	4,750 kg
Fat	7.7%
Fat	334 kg
Protein	NA
Parent Average Yields	4,547 kg

BHEEM

PRODUCTION TRAITS	
Dam's Yield	4,211kg
Sire Dams Yield	NA
Fat	7.9 %
Fat	333 kg
Protein	NA
Parent Average Yields	NA

GABBAR

PRODUCTION TRAITS	
Dam's Yield	4,185 kg
Sire Dams Yield	NA
Fat	7.9 %
Fat	331 kg
Protein	NA
Parent Average Yields	NA

VIKRAM

PRODUCTION TRAITS	
Dam's Yield	3,998 kg
Sire Dams Yield	3,771 kg
Fat	8.0 %
Fat	320 kg
Protein	4.5%
Parent Average Yields	3,885 kg

VICKY

PRODUCTION TRAITS	
Dam's Yield	3,848 kg
Sire Dams Yield	3,965 kg
Fat	8.3%
Fat	319 kg
Protein	4.89%
Parent Average Yields	3,907 kg

ARJUN

PRODUCTION TRAITS	
Dam's Yield	3,790 kg
Sire Dams Yield	3,894 kg
Fat	8.1 %
Fat	307 kg
Protein	4.5%
Parent Average Yields	3,842 kg

RISHI

PRODUCTION TRAITS	
Dam's Yield	3,888 kg
Sire Dams Yield	3,338 kg
Fat	7.9 %
Fat	307 kg
Protein	4.7%
Parent Average Yields	3,613 kg

RAMESH

PRODUCTION TRAITS	
Dam's Yield	3,821 kg
Sire Dams Yield	3,206 kg
Fat	7.9%
Fat	302 kg
Protein	4.2%
Parent Average Yields	3,514 kg

SAHIL

PRODUCTION TRAITS	
Dam's Yield	3,830 kg
Sire Dams Yield	4,081 kg
Fat	7.9%
Fat	303 kg
Protein	4.2%
Parent Average Yields	3,956 kg

DEEPAK

PRODUCTION TRAITS	
Dam's Yield	4,020 kg
Sire Dams Yield	4,081 kg
Fat	7.6 %
Fat	306 kg
Protein	5.2%
Parent Average Yields	4,051 kg

SANDY

PRODUCTION TRAITS	
Dam's Yield	3,870 kg
Sire Dams Yield	4,404 kg
Fat	7.9 %
Fat	306 kg
Protein	4.2%
Parent Average Yields	4,137 kg

ANIL

PRODUCTION TRAITS	
Dam's Yield	3,695 kg
Sire Dams Yield	3,056 kg
Fat	8.3 %
Fat	307 kg
Protein	4.79%
Parent Average Yields	3,376 kg

VIKAS

PRODUCTION TRAITS	
Dam's Yield	3,123 kg
Sire Dams Yield	3,206 kg
Fat	7.9 %
Fat	247 kg
Protein	4.9%
Parent Average Yields	3,165 kg

SANGRAM

PRODUCTION TRAITS	
Dam's Yield	3,502 kg
Sire Dams Yield	3,894 kg
Fat	8.2 %
Fat	287 kg
Protein	NA
Parent Average Yields	NA

AMIT

PRODUCTION TRAITS	
Dam's Yield	4,030 kg
Sire Dams Yield	4,081 kg
Fat	7.8 %
Fat	314 kg
Protein	4.2%
Parent Average Yields	4,056 kg

IMRAN

PRODUCTION TRAITS	
Dam's Yield	3,450 kg
Sire Dams Yield	3,787 kg
Fat	7.33%
Fat	253 kg
Protein	4.63%
Parent Average Yields	3,619 kg

TEJAS

PRODUCTION TRAITS	
Dam's Yield	3,284 kg
Sire Dams Yield	3,787 kg
Fat	7.8%
Fat	256 kg
Protein	5.3%
Parent Average Yields	3,536 kg

SHANDAR

PRODUCTION TRAITS	
Dam's Yield	3,540 kg
Sire Dams Yield	3,865 kg
Fat	7.4%
Fat	262 kg
Protein	5%
Parent Average Yields	3,703 kg

NILESH

PRODUCTION TRAITS	
Dam's Yield	3,627 kg
Sire Dams Yield	3,404 kg
Fat	7.6%
Fat	276 kg
Protein	4.7%
Parent Average Yields	3,516 kg

AJAY

PRODUCTION TRAITS	
Dam's Yield	3,587 kg
Sire Dams Yield	3,340 kg
Fat	7.7%
Fat	276 kg
Protein	4.77%
Parent Average Yields	3,464 kg

VIRAT

PRODUCTION TRAITS	
Dam's Yield	3,578 kg
Sire Dams Yield	3,787 kg
Fat	8.2%
Fat	293 kg
Protein	4.87%
Parent Average Yields	3,683 kg

MANOJ

PRODUCTION TRAITS	
Dam's Yield	3,942 kg
Sire Dams Yield	3,787 kg
Fat	7.5%
Fat	296 kg
Protein	4.3%
Parent Average Yields	3,865 kg

ISHANT

PRODUCTION TRAITS	
Dam's Yield	3,900 kg
Sire Dams Yield	3,787 kg
Fat	7.6%
Fat	296 kg
Protein	4.3%
Parent Average Yields	3,844 kg

SANJAI

PRODUCTION TRAITS	
Dam's Yield	3,740 kg
Sire Dams Yield	3,695 kg
Fat	8%
Fat	299 kg
Protein	4.1%
Parent Average Yields	3,718 kg



A service to monitor reproductive performance of the herd

ABS Monitor is a data monitoring service with real-time technical support provided by Genus ABS to costumers in order to optimize their reproductive program and pregnancy production to ensure profitability of the herd.

Genus ABS counts with a world-class qualified team of experts ready to support producers on the evaluation and design of reproductive programs for their herds.

ABS Monitor was developed using the global practical experience of the Genus ABS Technical Service Team. This program evaluates reproductive performance in a Easy, Quick, Uncomplicated way in order to facilitate the on-farm decision making process.

ABS Monitor has two main components:

- Offline: for on-farm data collection;
- Online: for data analysis, results reporting, benchmarking, and real-time consulting.

Maximize genetic improvement in your herd with the GMS. Contact your local ABS representative or call +91 20 6510 9252 to learn more.



ABS INDIA The GMS® Program

GMS® ensures the most profitable genetics in the world are used in the most optimal way to secure long term genetic progress.



Flexible breeding goals

PLAN

Profitable mating recommendations

ACTION

Measure your genetic progress

PROFIT



IMPORTED ABS IMPORTED

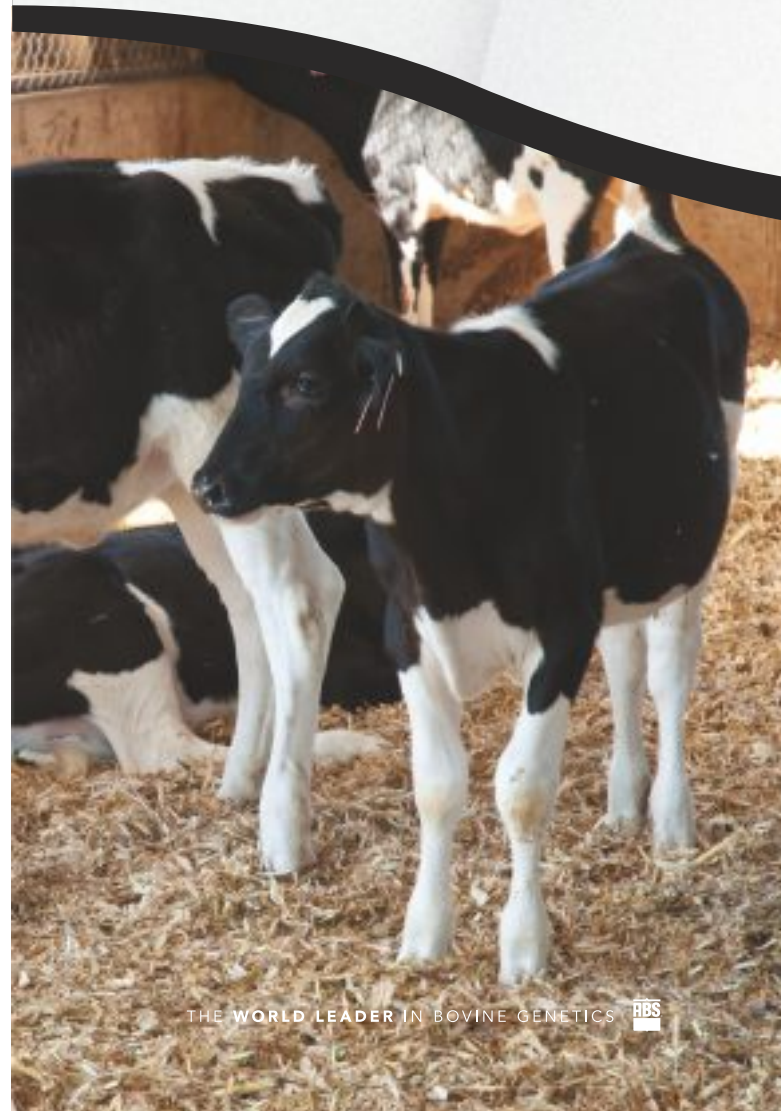
ABS India offers imported semen from its global facilities.

- Imported conventional Holstein (ABS USA)
- Imported conventional Jersey (ABS USA)
- Imported conventional GIR (ABS BRAZIL)



SEXATION ABS SEXATION

Grow within herd with the best females
 Reduce calving difficulty – improve reproductive performance
 Efficient breeding programs



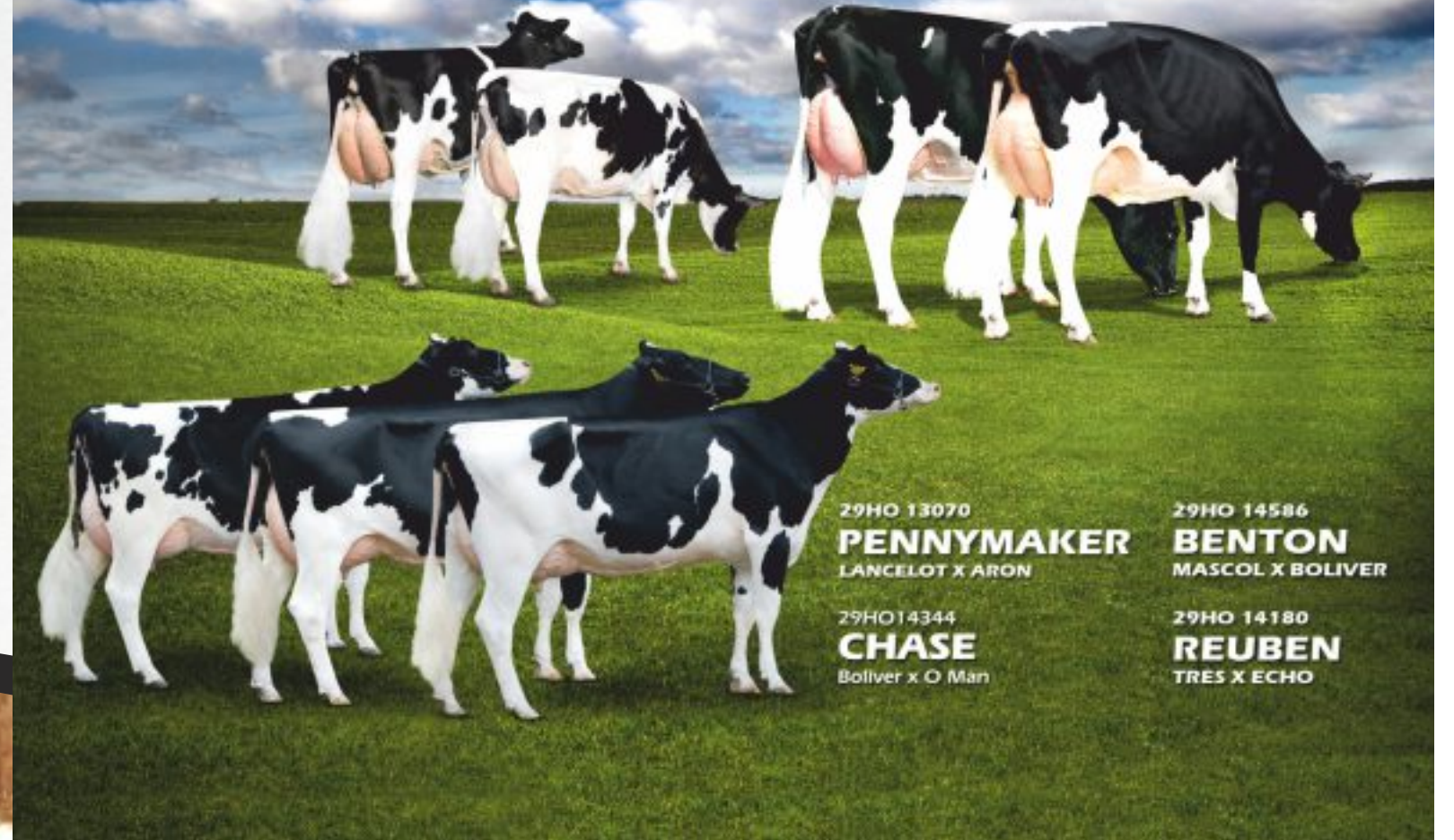
HARNESSING THE POWER OF ABS GLOBAL GENETICS

29HO 13664
LEVI
 BUCKEYE X OMAN

529HO11909
HAYDEN
 OMAN X MTOTO

29HO 13846
TRIGGER
 SHOTTLE X BOLIVER

29HO 13363
DOBERMAN
 SHOTTLE X GRANGER



29HO 13070
PENNYMAKER
 LANCELOT X ARON

29HO 14586
BENTON
 MASCOL X BOLIVER

29HO14344
CHASE
 Boliver x O Man

29HO 14180
REUBEN
 TRES X ECHO



ABS India in association with
 ABS Brazil offers to provide
 GIR semen in India

GIR

Gengis Khan	18,824 kg
Brasilia	15,388 kg
Teatro	15,126 kg
Falcon	12,192 kg

